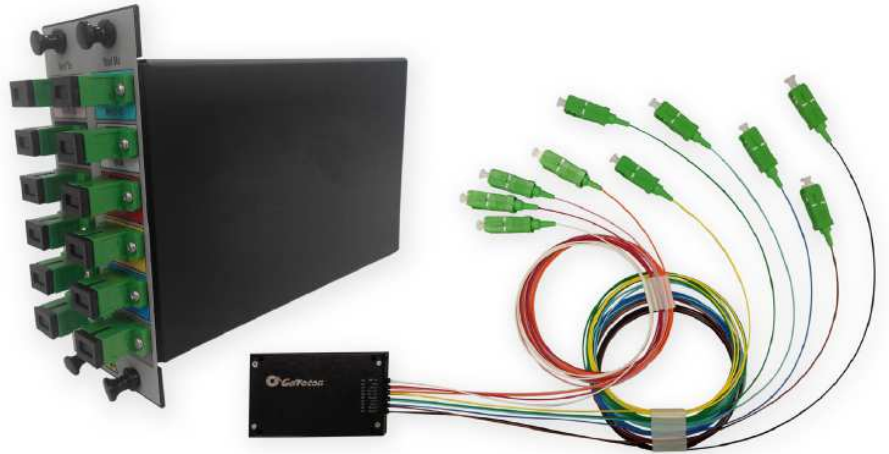


FEATURES:

- RoHS 6/6 Compliant
- Low Insertion Loss
- High Channel Isolation
- Flat and Wide Passband
- Low Polarization Dependent Loss
- Epoxy-Free Optical Path
- Exceptionally Stable and Reliable
- Telcordia GR-1221 Compliant
- Thin-Film-Filter based

APPLICATIONS:

- Dense WDM Systems
- Long Haul Networks
- Metro Networks
- Access/ Enterprise Networks
- CATV Fiber Optic Links

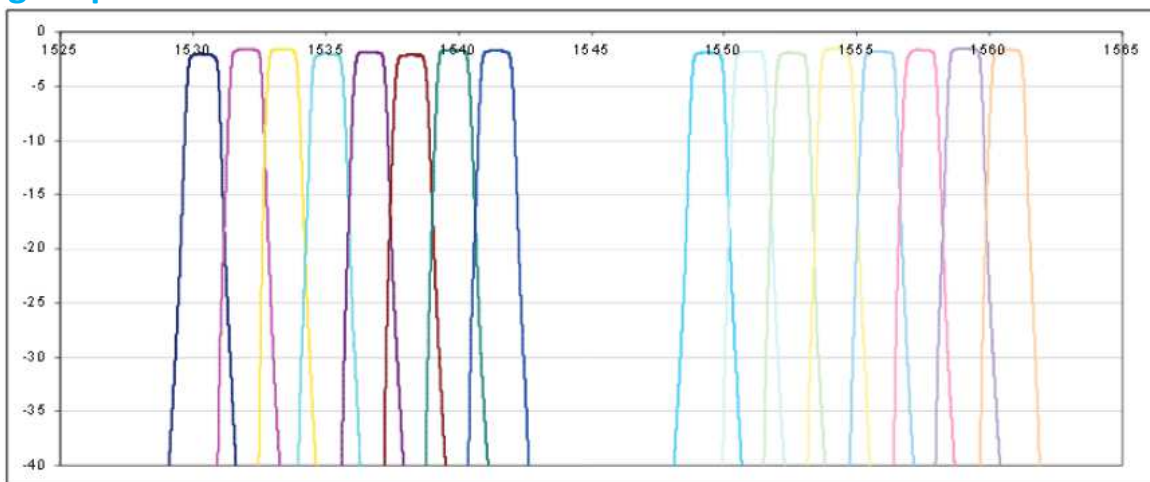


DESCRIPTION:

Based on Go!Foton's patented technology, SELMUX™ series is introduced to cover all TFF-based components using an all-glass platform for improved performance, such as lower insertion loss and higher thermal stability, with a competitive cost structure. Because of its high thermal stability, SELMUX series can offer compliance to Outside Plant (OSP) requirement upon request.

Go!Foton's DWDMs, are based on NSG's patent pending technology. This technology puts Go!Foton as one of only a few companies with a unique process for tuning the center wavelength in the DWDM spectrum. Based on NSG's unique SELFOC technology, the process eliminates the severe manufacturing burdens placed on the thin film filter, thus simplifying center wavelength tolerances and reducing cost. Go!Foton's SELMUX products are epoxy-free in the optical path and are in compliance with RoHS 6/6.

Wavelength Spectrum:



SPECIFICATIONS:

The products supplied to this specification shall meet or exceed all the requirements specified herein.

OPTICAL CHARACTERISTICS

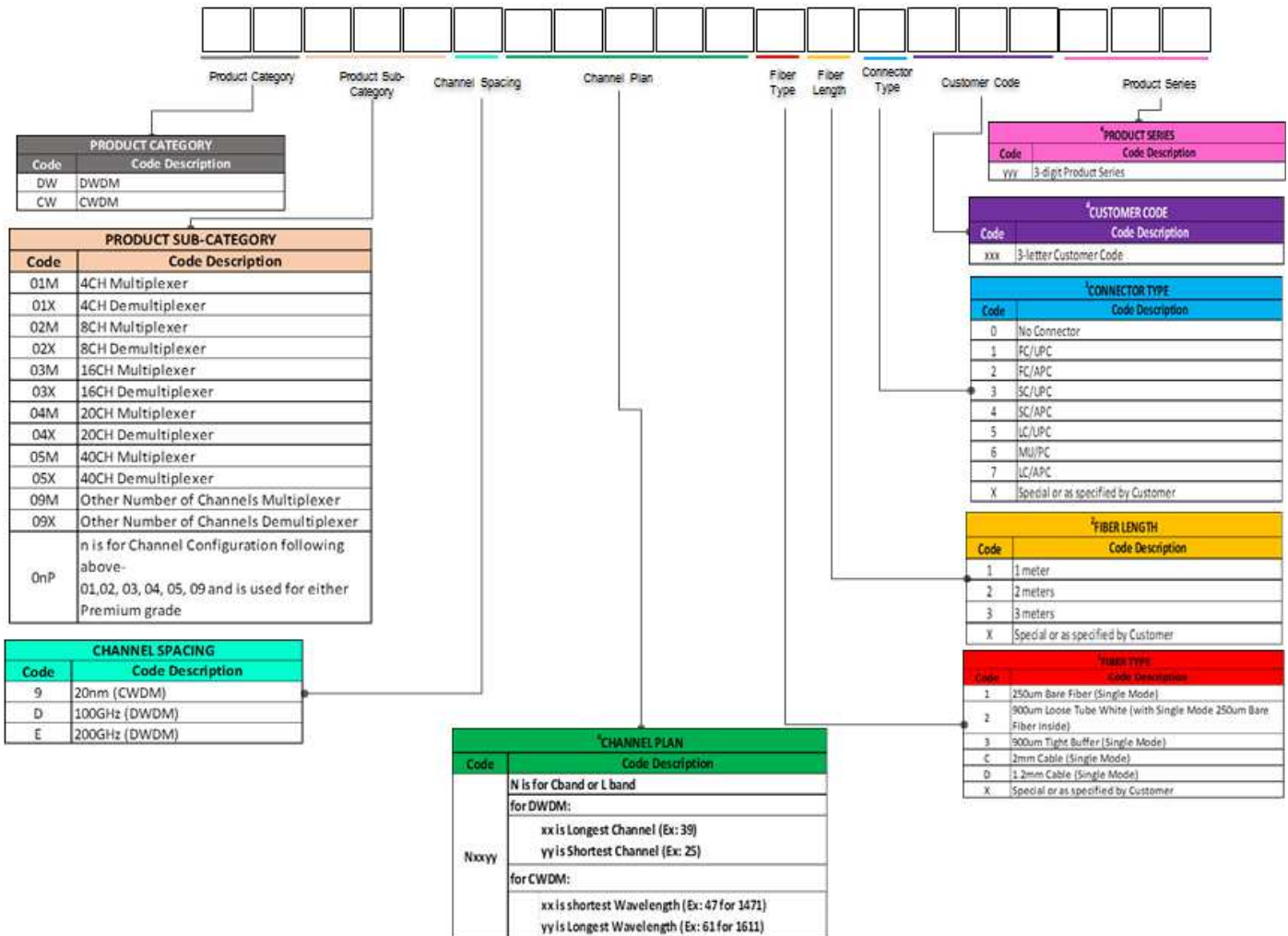
Parameter		Unit	2ch	4ch	8ch	12ch	16ch	20ch
Operating Wavelength		nm	ITU					
Channel Spacing		GHz	200					
Center Wavelength		nm	ITU					
Passband Bandwidth		nm	$\lambda \pm 0.25$					
DWDM port Insertion Loss		dB	≤1.5	≤2.2	≤3.2	≤3.4	≤3.8	≤4.0
Uniformity		dB	≤1.0			≤1.5		≤2.0
Passband Ripple		dB	≤ 0.5					
Adjacent Channel Isolation		dB	≥28					
Non-Adjacent Channel Isolation		dB	≥ 45					
Polarization Dependent Loss		dB	≤ 0.2					
Optical Return Loss		dB	≥50					
Directivity		dB	≥50					
Optical Power Handling		mW	≤ 500					
Operating Temperature Range		°C	-40~85					
Storage Temperature Range		°C	-40~85					
Fiber Type		-	ITU G657A2, G657 B2 and G65D Compliant Single Mode Fiber					
Port Identification		-	Cable Marker					
Package Size	Cassette	mm	2ch/ 4ch: 60x35x6					
			8ch: 70x45x8					
			12ch / 16ch/ 20ch: 110x90x8					
	LGX		2ch / 4ch / 8ch: 1-slot 158x130(118)x28.8(26.8)					
12ch / 16ch / 20ch: 2-slot 158x130(118)x57.6(56.1)								

Notes:

1. All specifications include connector losses.
2. Uniformity is defined as loss difference between output ports.
3. Other customized channels are also available per customer's request
4. Other package size available upon request.

Ordering Information:

WDM in Cassette



Notes:

- ¹ Standard Fiber Type is ITU-T G657.A2/B2 and G652.D.
- ² Standard Package Size is 60x35x6mm for 4ch, 70x45x8mm for 8ch, 110x90x8mm for 16 and 20ch and 140x95x16mm for 40ch
- ³ Fiber Length tolerance is +/-0.1 meter.
- ⁴ All ports are with connector of the same type.
- ⁵ Only applicable for products which are not covered by the Standard Specification.

Example: DW01MEC3933C24

DWDM 200GHz Module, 4CH Multiplexer with Channels C39, C37, C35, and C33, 2mm Cable (Single Mode) with SC/APC connectors, two (2) meters

Go!Foton Inc. (Japan)
5-4 Tokodai, Tsukuba City
Ibaraki Pref. Japan, 300-2635
Tel: +81 029 847 8686
Fax: +81 029 847 8693
www.gofoton.co.jp

Go!Foton Europe Sales
Hoogerheide
The Netherlands
CustomerCare@gofoton.com
Tel: +31 164 62 04 22
Fax: +31 164 62 04 17
www.gofoton.eu

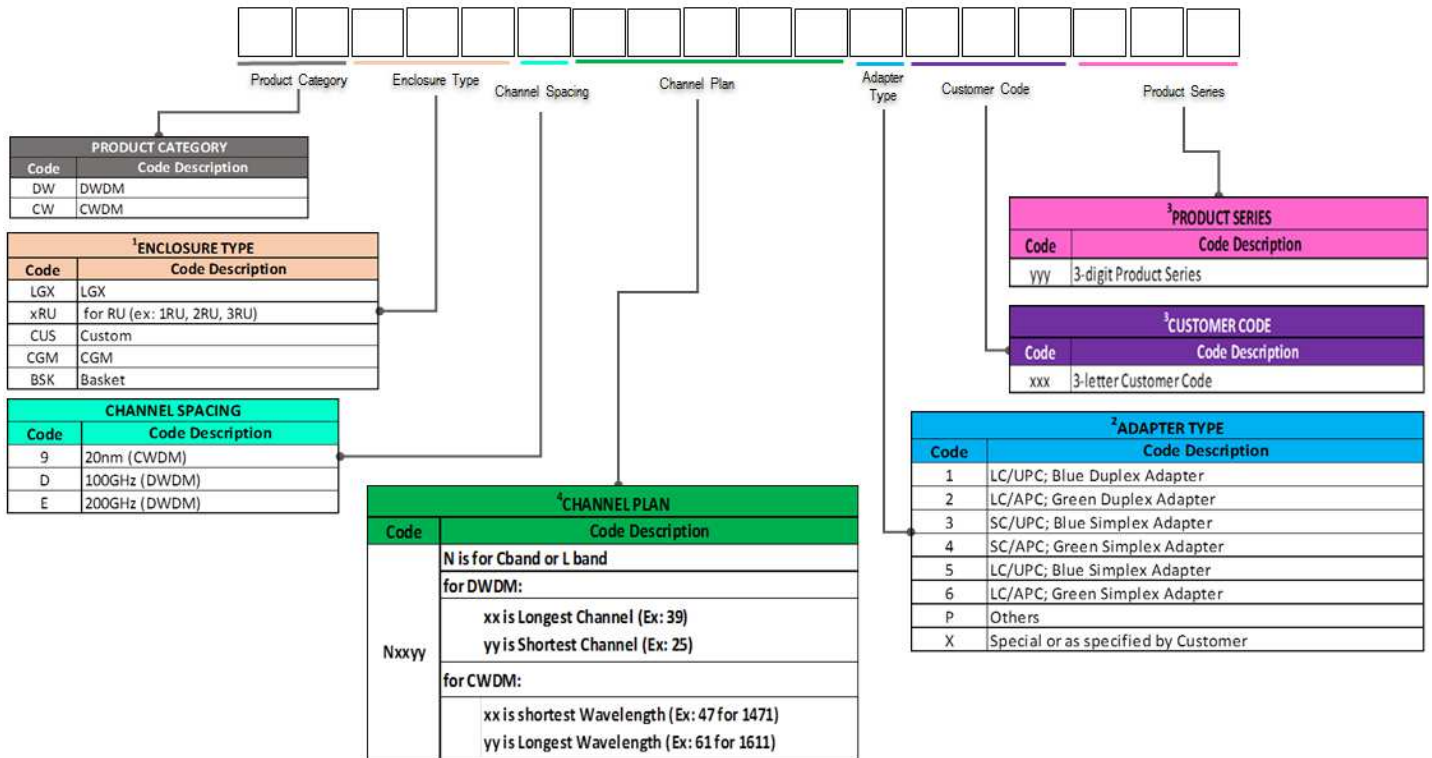
GF Micro Optics Philippines, Inc.
LTI Standard Factory Building
134 East Main Avenue, SEPZ
Laguna Technopark,
Biñan, Laguna 4024 Philippines
Tel: +63 2 751 0304
Fax: +63 2 751 0305
www.gofoton.ph

Go!Foton Nanjing Company Ltd.
Nanjing Jiangning National
High Tech Industrial Park
Nanjing Jiangning Science Park
2 Qiande Road, Building 7, 1st Floor
Jiangning, Nanjing
Jiangsu, 211100, China
Tel: +86 25 5216-3442
www.gofoton.cn

Go!Foton West Coast Sales
100 Century Center Court, Suite 203
San Jose, CA 95112, USA
Go!Foton Headquarters
28 World's Fair Drive
Somerset, NJ 08873, USA
Tel: +1 732 469 9650
Fax: +1 732 469 9654
www.gofoton.com

Ordering Information:

WDM in Enclosure



Notes:

- ¹ Standard Package Size is 1 slot for 4ch and 8ch, 2 slot for 16ch and 20ch and 3 slot for 40ch
- ² All ports are with connector and adapter of the same type.
- ³ Only applicable for products which are not covered by the Standard Specification.
- ⁴ Channel Plan may vary depending on customer request

Example: DWLGXEC39334

DWDM 200GHz Module, C27~C20, with SC/APC connectors and SC Green Simplex Adapter

Go!Foton Inc. (Japan)
5-4 Tokodai, Tsukuba City
Ibaraki Pref. Japan, 300-2635
Tel: +81 029 847 8686
Fax: +81 029 847 8693
www.gofoton.co.jp

Go!Foton Europe Sales
Hoogerheide
The Netherlands
CustomerCare@gofoton.com
Tel: +31 164 62 04 22
Fax: +31 164 62 04 17
www.gofoton.eu

GF Micro Optics Philippines, Inc.
LTI Standard Factory Building
134 East Main Avenue, SEPZ
Laguna Technopark,
Biñan, Laguna 4024 Philippines
Tel: +63 2 751 0304
Fax: +63 2 751 0305
www.gofoton.ph

Go!Foton Nanjing Company Ltd.
Nanjing Jiangning National
High Tech Industrial Park
Nanjing Jiangning Science Park
2 Qiande Road, Building 7, 1st Floor
Jiangning, Nanjing
Jiangsu, 211100, China
Tel: +86 25 5216-3442
www.gofoton.cn

Go!Foton West Coast Sales
100 Century Center Court, Suite 203
San Jose, CA 95112, USA
Go!Foton Headquarters
28 World's Fair Drive
Somerset, NJ 08873, USA
Tel: +1 732 469 9650
Fax: +1 732 469 9654
www.gofoton.com