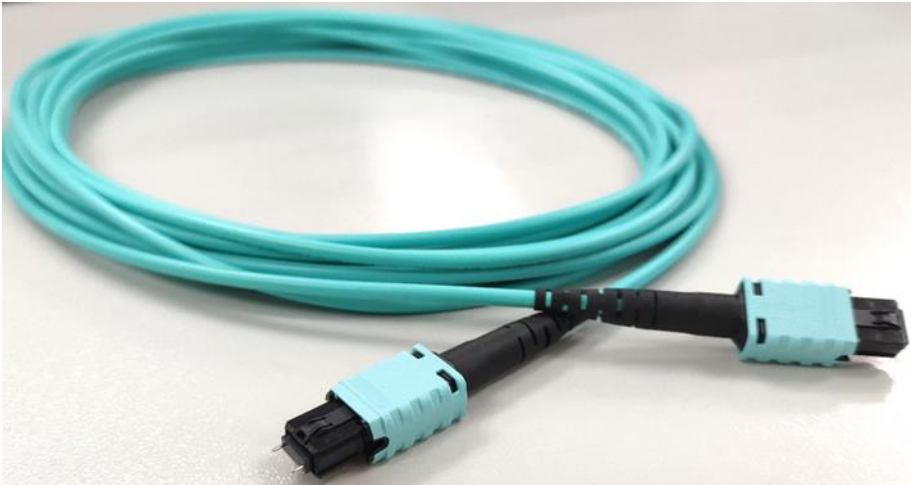


## MTP® PRO Patchcords



### Quick Pin and Polarity Change

- ✓ No re-termination
- ✓ No connector housing removal
- ✓ No fiber damage

### Description:

GoFoton's multi-fiber jumpers using USCONEC MTP® PRO connector offers quick and effective field polarity change and pin reconfiguration that is simple and reliable. The MTP® PRO Pin Change Tool is available for easy and reliable pin configuration without removing the housing or handling loose pins.

The Go!Foton MTP® PRO jumper is designed and tested for high reliability. We provide experienced technical application support, competitive pricing and On-Time delivery for our customers.

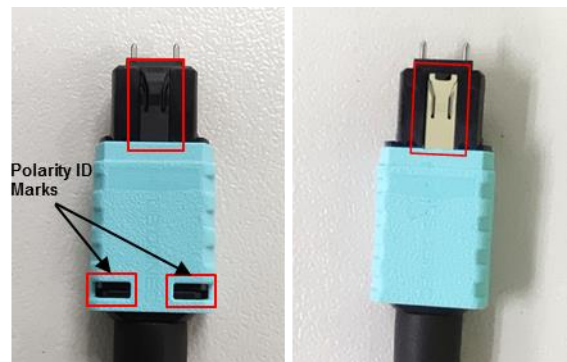
### Features:

- Compliant with GR-1435
- Quick polarity change by reversing the MPO key using MTP® PRO Pin Change Tool
- Ease of polarity confirmation with ID marks
- Color coded reusable pin exchanger without handling loose pins
- Exceed 19.6N IEC pin retention requirement
- MTP® PRO connector surpassed IEC 61754-7 and TIA FOCIS 5
- Compatible to standard MPO adapters

### Applications:

- Telecommunication Networks
- Data Communication Networks
- Optical System Access Networks
- Broadband / CATV Networks
- Equipment / Switch Interconnections

### Factory and Configured Setting



Factory Setting

Configured Setting

- Black key corresponds to factory setting while white key shows configured setting
- Polarity ID marks for polarity confirmation

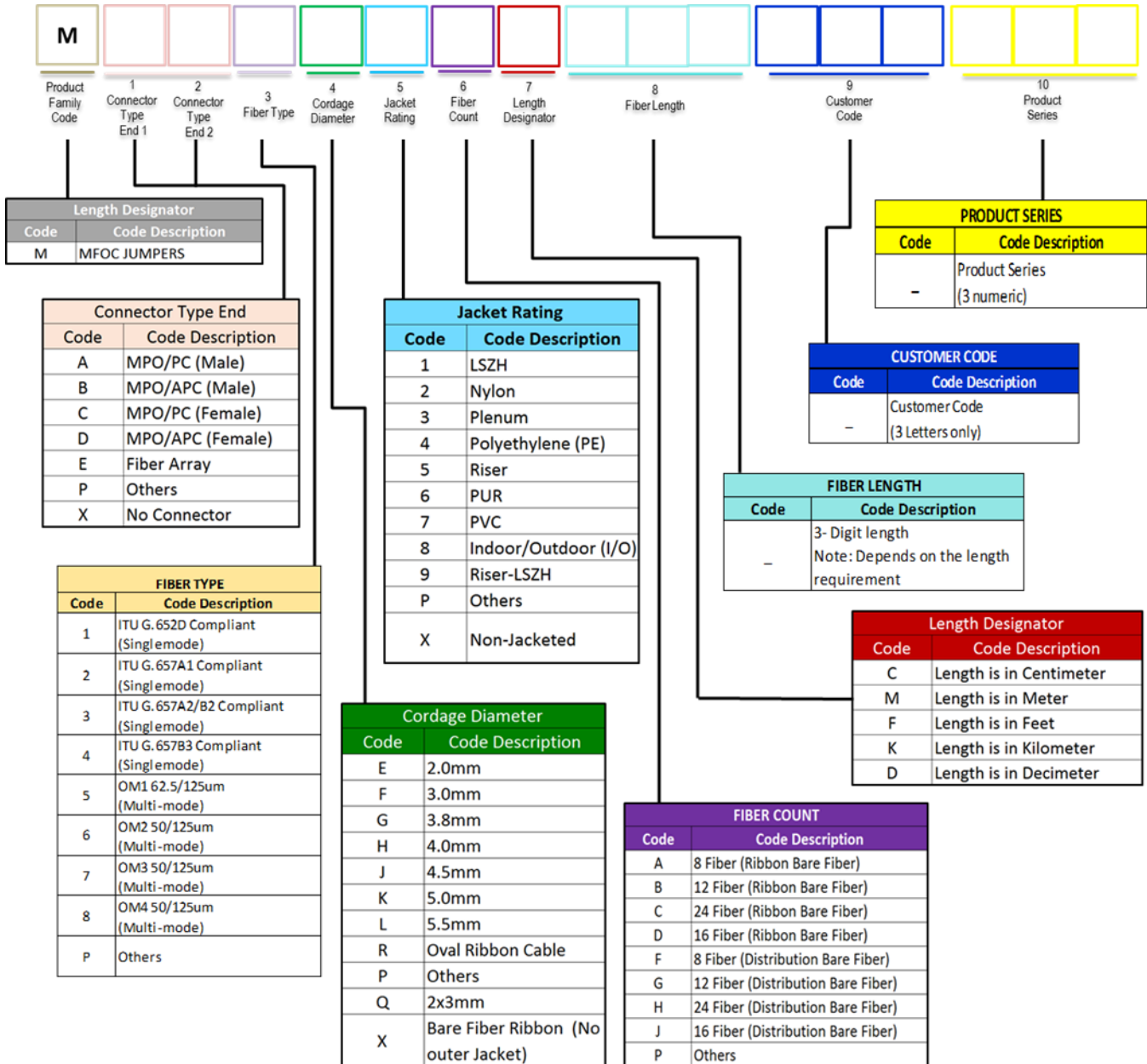


# MTP® PRO Patchcords

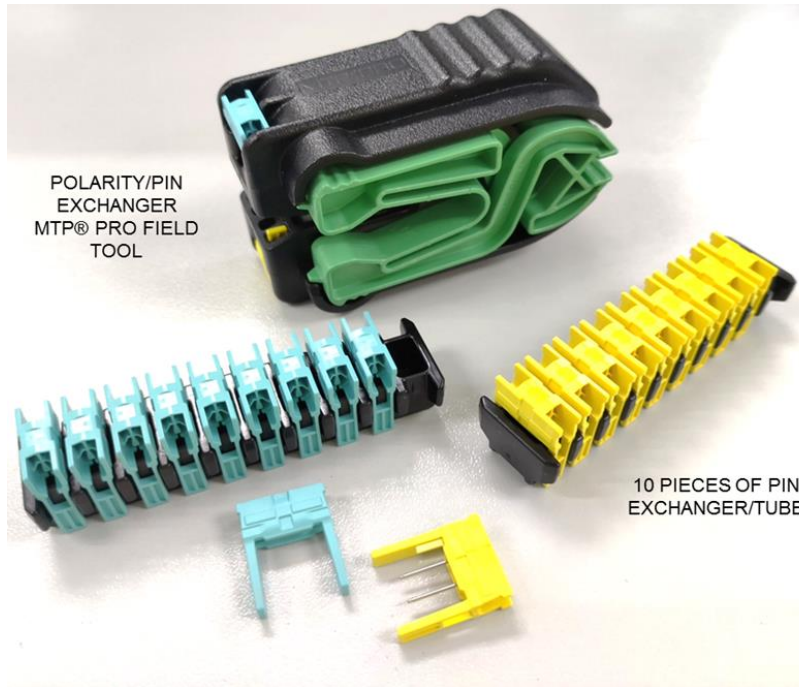
## Specifications:

Connector Type	Insertion Loss	Return Loss
SMF APC	0.30dB	65dB
MMF UPC	0.30dB	28dB

## Ordering Guide:



# MTP® PRO Field Tool Polarity & Gender Change Kit

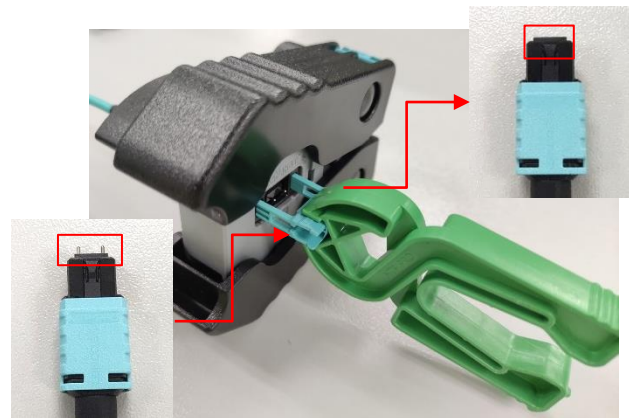
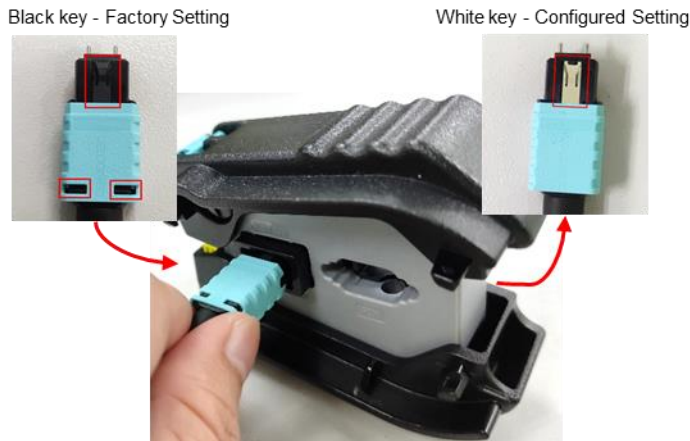


## Polarity Change:

GoFoton offers USCONEC MTP® PRO field tool for easy polarity change. Simply inserting the MTP® PRO connector on the polarity change tool will reverse the black key while exposing the white key simultaneously changing the jumper's polarity.

## Gender Change:

Changing the gender is done quickly using the same field tool. Insert the MTP® PRO connector on the gender change port and use the pin exchanger that attach/retrieves the pin to change the gender.



## MTP® PRO Field Tool Polarity and Gender Change

### Ordering Guide:

Item Number	Product Name	Remarks
MF1A5003	PIN EXCHANGER MTP® PRO FMLE-MM AQUA	1 tube = 10pcs of Pin Exchanger
MF1A5004	PIN EXCHANGER MTP® PRO FMLE-SM YELLOW	1 tube = 10pcs of Pin Exchanger
MF3A5005	PIN EXCHANGER MTP® PRO MLE-MM AQUA	1 tube = 10pcs of Pin Exchanger
MF3A5006	PIN EXCHANGER MTP® PRO MLE-SM YELLOW	1 tube = 10pcs of Pin Exchanger
MF3A5007	POLARITY/PIN EXCHANGER MTP® PRO FIELD TOOL	1pc

