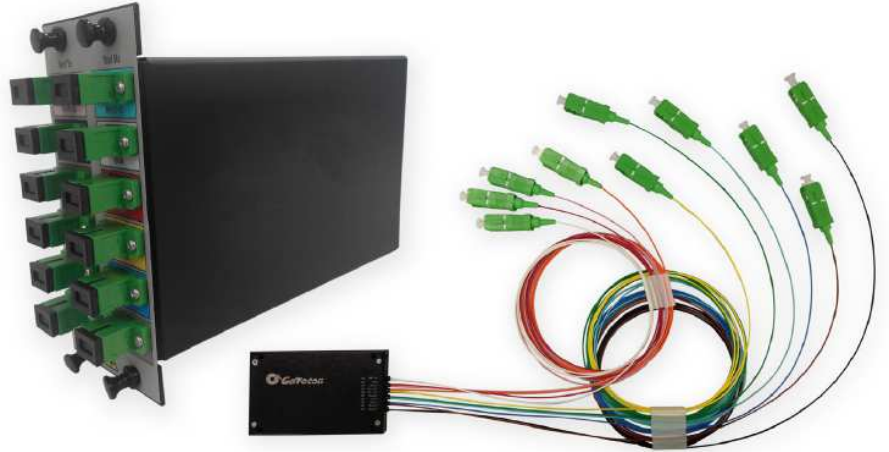


**FEATURES:**

- RoHS 6/6 Compliant
- Low Insertion Loss
- High Channel Isolation
- Flat and Wide Passband
- Low Polarization Dependent Loss
- Epoxy-Free Optical Path
- Exceptionally Stable and Reliable
- Telcordia GR-1221 Compliant
- Thin-Film-Filter based

**APPLICATIONS:**

- Coarse WDM Systems
- Metro Networks
- Enterprise Networks
- CATV Fiber Optic Links

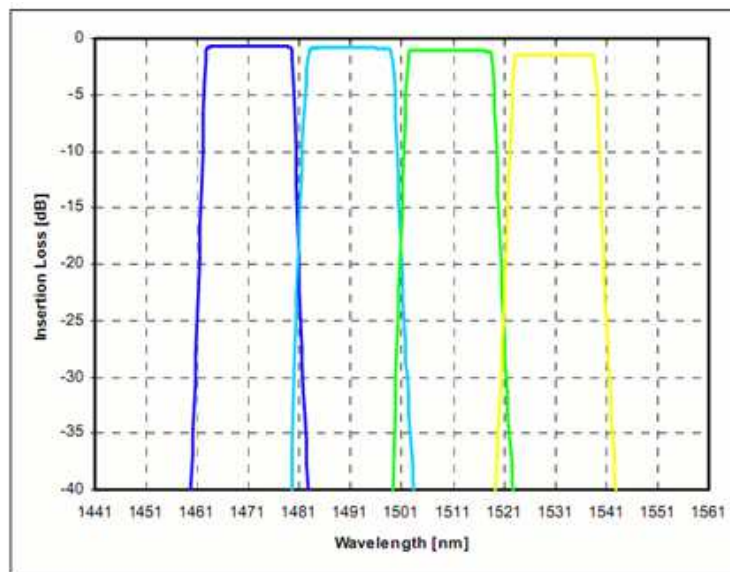


**DESCRIPTION:**

Based on Go!Foton's patented technology, SELMUX™ series is introduced to cover all TFFbased components using an all-glass platform for improved performance, such as lower insertion loss and higher thermal stability, with a competitive cost structure. Because of its high thermal stability, SELMUX series can offer compliance to Outside Plant (OSP) requirement upon request.

Go!Foton's Coarse Wavelength Division Multiplexing (CWDM) Mux and DeMux Modules are based on its unique TFF SELMUX technology that provides a high quality CWDM device with high channel isolation, low polarization dependent loss, flat and wide passband, and stable environmental performance. Go!Foton's TFF SELMUX products are epoxy-free in the optical path and are in compliance with RoHS 6/6.

**Wavelength Spectrum:**



**Go!Foton Inc. (Japan)**  
5-4 Tokodai, Tsukuba City  
Ibaraki Pref. Japan, 300-2635  
Tel: +81 029 847 8686  
Fax: +81 029 847 8693  
www.gofoton.co.jp

**Go!Foton Europe Sales**  
Hoogerheide  
The Netherlands  
CustomerCare@gofoton.com  
Tel: +31 164 62 04 22  
Fax: +31 164 62 04 17  
www.gofoton.eu

**GF Micro Optics Philippines, Inc.**  
LTI Standard Factory Building  
134 East Main Avenue, SEPZ  
Laguna Technopark,  
Biñan, Laguna 4024 Philippines  
Tel: +63 2 751 0304  
Fax: +63 2 751 0305  
www.gofoton.ph

**Go!Foton Nanjing Company Ltd.**  
Nanjing Jiangning National  
High Tech Industrial Park  
Nanjing Jiangning Science Park  
2 Qiande Road, Building 7, 1st Floor  
Jiangning, Nanjing  
Jiangsu, 211100, China  
Tel: +86 25 5216-3442  
www.gofoton.cn

**Go!Foton West Coast Sales**  
100 Century Center Court, Suite 203  
San Jose, CA 95112, USA  
**Go!Foton Headquarters**  
28 World's Fair Drive  
Somerset, NJ 08873, USA  
Tel: +1 732 469 9650  
Fax: +1 732 469 9654  
www.gofoton.com

### SPECIFICATIONS:

The products supplied to this specification shall meet or exceed all the requirements specified herein.

### OPTICAL CHARACTERISTICS

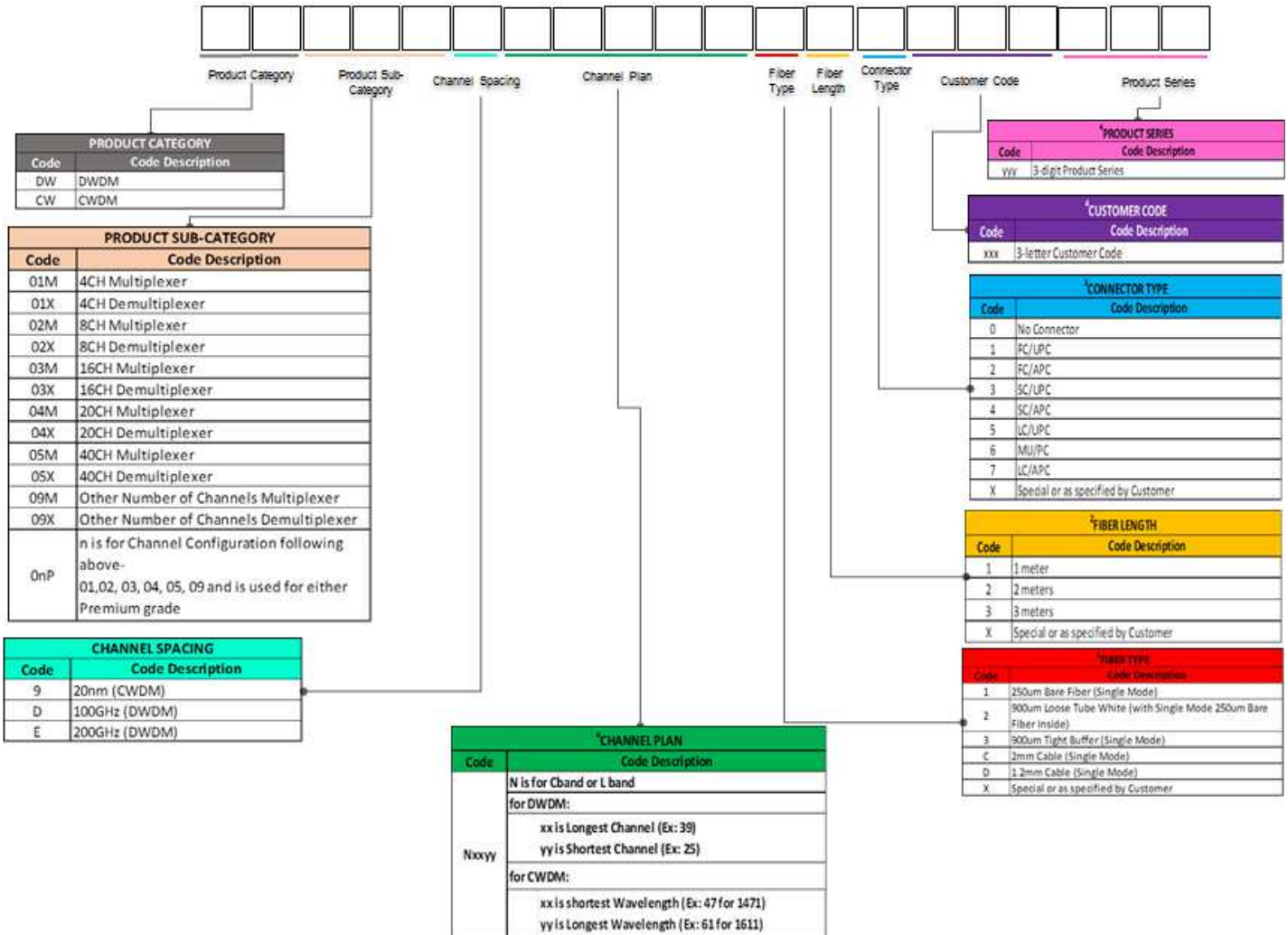
Parameter		Unit	2	4	8	16
Operating Wavelength		nm	1460~640			
Channel Spacing		nm	20			
Center Wavelength		nm	1271, 1291,1311,1331,1351,1371,1391,1411,1431, 1451,1471,1491, 1511, 1531,1551,1571,1591,1611			
Passband Bandwidth		nm	$\Delta C \pm 6.5$			
CWDM Port Insertion Loss		dB	$\leq 1.2$	$\leq 2.2$	$\leq 3.2$	$\leq 3.4$
Passband Ripple		dB	$\leq 0.50$			
Adjacent Channel Isolation		dB	$\geq 30$			
Non-Adjacent Channel Isolation		dB	$\geq 45$			
Polarization Dependent Loss		dB	$\leq 0.20$			
Optical Return Loss		dB	$\geq 50$			
Directivity		dB	$\geq 55$			
Optical Power Handling		mW	$\leq 500$			
Operating Temperature Range		°C	-40~85			
Storage Temperature Range		°C	-40~85			
Fiber Type		-	ITU G657A2, G657 B2 and G65D Compliant Single Mode Fiber			
Port Identification		-	Cable Marker			
Package Size	Cassette	mm	<b>2ch/ 4ch:</b> 60x35x6			
			<b>8ch:</b> 70x45x8			
			<b>12ch / 16ch:</b> 110x90x8			
	<b>2ch / 4ch / 8ch: 1-slot</b> 158x130(118)x28.8(26.8)					
	LGX		<b>12ch / 16ch: 2-slot</b> 158x130(118)x57.6(56.1)			

#### Notes:

- All specifications include connector losses.
- Uniformity is defined as loss difference between output ports.
- Other customized channels are also available per customer's request
- Other package size available upon request.

## Ordering Information:

### WDM in Cassette



#### Notes:

- <sup>1</sup> Standard Fiber Type is ITU-T G657.A2/B2 and G652.D.
- <sup>2</sup> Standard Package Size is 60x35x6mm for 4ch, 70x45x8mm for 8ch, 110x90x8mm for 16 and 20ch and 140x95x16mm for 40ch
- <sup>3</sup> Fiber Length tolerance is +/-0.1 meter.
- <sup>4</sup> All ports are with connector of the same type.
- <sup>5</sup> Only applicable for products which are not covered by the Standard Specification.

**Example: CW02X9N4761314**

**8CH CWDM Demultiplexer with channels, 1471~1611, 900um Tight Buffer (Single Mode) with SC/APC connectors, one (1) meter**

GoFoton Inc. (Japan)  
5-4 Tokodai, Tsukuba City  
Ibaraki Pref. Japan, 300-2635  
Tel: +81 029 847 8686  
Fax: +81 029 847 8693  
www.gofoton.co.jp

GoFoton Europe Sales  
Hoogerheide  
The Netherlands  
CustomerCare@gofoton.com  
Tel: +31 164 62 04 22  
Fax: +31 164 62 04 17  
www.gofoton.eu

GF Micro Optics Philippines, Inc.  
LTI Standard Factory Building  
134 East Main Avenue, SEPZ  
Laguna Technopark,  
Biñan, Laguna 4024 Philippines  
Tel: +63 2 751 0304  
Fax: +63 2 751 0305  
www.gofoton.ph

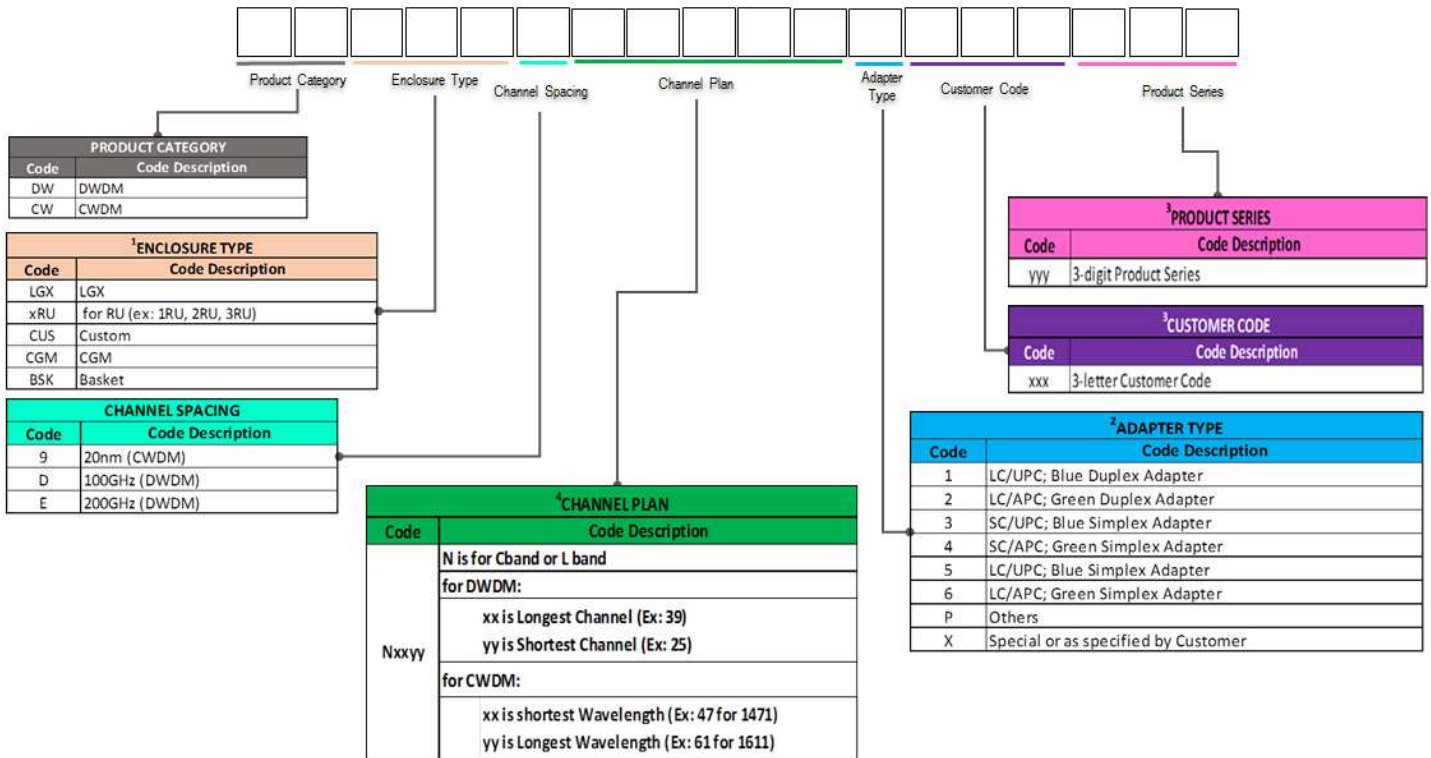
GoFoton Nanjing Company Ltd.  
Nanjing Jiangning National  
High Tech Industrial Park  
Nanjing Jiangning Science Park  
2 Qiande Road, Building 7, 1st Floor  
Jiangning, Nanjing  
Jiangsu, 211100, China  
Tel: +86 25 5216-3442  
www.gofoton.cn

GoFoton West Coast Sales  
100 Century Center Court, Suite 203  
San Jose, CA 95112, USA  
GoFoton Headquarters  
28 World's Fair Drive  
Somerset, NJ 08873, USA  
Tel: +1 732 469 9650  
Fax: +1 732 469 9654  
www.gofoton.com



## Ordering Information:

### WDM in Enclosure



#### Notes:

- <sup>1</sup> Standard Package Size is 1 slot for 4ch and 8ch, 2 slot for 16ch and 20ch and 3 slot for 40ch
- <sup>2</sup> All ports are with connector and adapter of the same type.
- <sup>3</sup> Only applicable for products which are not covered by the Standard Specification.
- <sup>4</sup> Channel Plan may vary depending on customer request

### Example: CWLGX947614

**CWDM Module with channels, 1471~1611, SC/APC, SC Green Simplex Adapter**