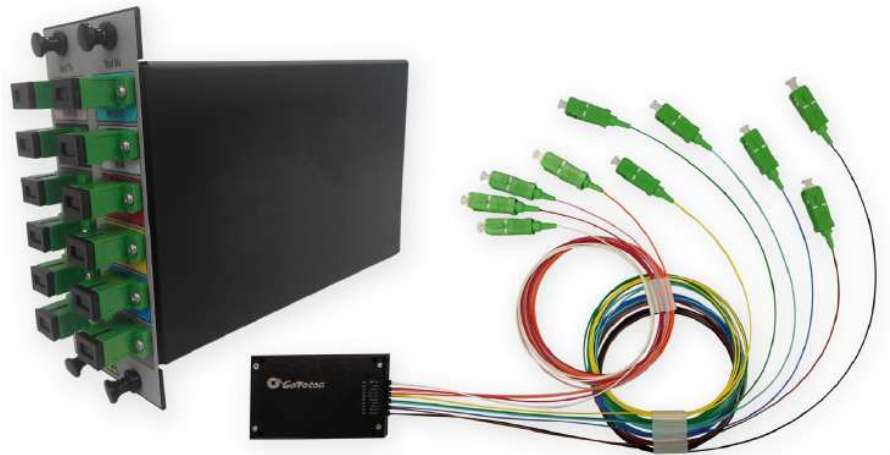


FEATURES:

- RoHS 6/6 Compliant
- Low Insertion Loss
- High Channel Isolation
- Flat and Wide Passband
- Low Polarization Dependent Loss
- Epoxy-Free Optical Path
- Exceptionally Stable and Reliable
- Telcordia GR-1221 Compliant
- Thin-Film-Filter based

APPLICATIONS:

- Dense WDM Systems
- Long Haul Networks
- Metro Networks
- Access/ Enterprise Networks
- CATV Fiber Optic Links

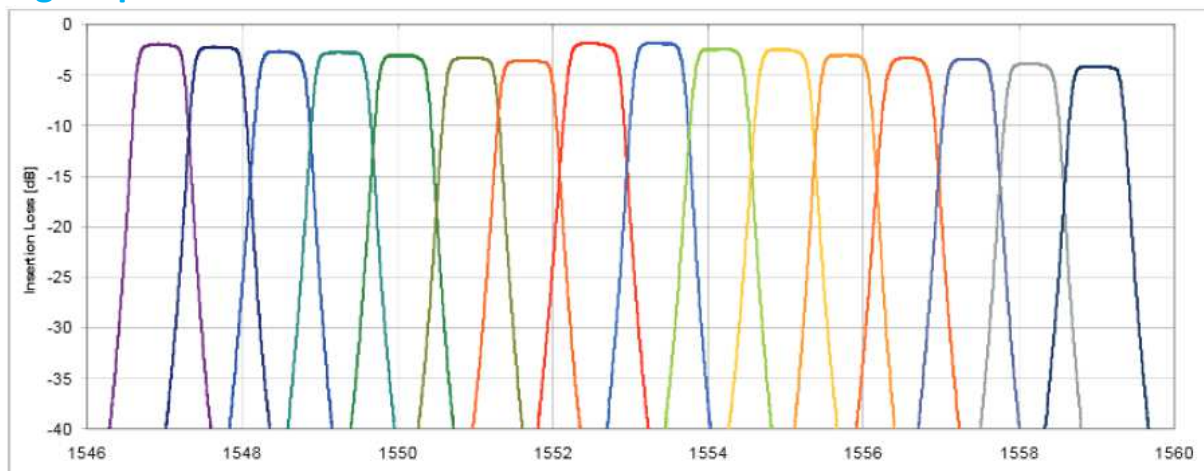


DESCRIPTION:

Based on Go!Foton's patented technology, SELMUX™ series is introduced to cover all TFF-based components using an all-glass platform for improved performance, such as lower insertion loss and higher thermal stability, with a competitive cost structure. Because of its high thermal stability, SELMUX series can offer compliance to Outside Plant (OSP) requirement upon request.

Go!Foton's DWDMs, are based on NSG's patent pending technology. This technology puts Go!Foton as one of only a few companies with a unique process for tuning the center wavelength in the DWDM spectrum. Based on NSG's unique SELFOC technology, the process eliminates the severe manufacturing burdens placed on the thin film filter, thus simplifying center wavelength tolerances and reducing cost. Go!Foton's SELMUX products are epoxy-free in the optical path and are in compliance with RoHS 6/6.

Wavelength Spectrum:



SPECIFICATIONS:

The products supplied to this specification shall meet or exceed all the requirements specified herein.

OPTICAL CHARACTERISTICS

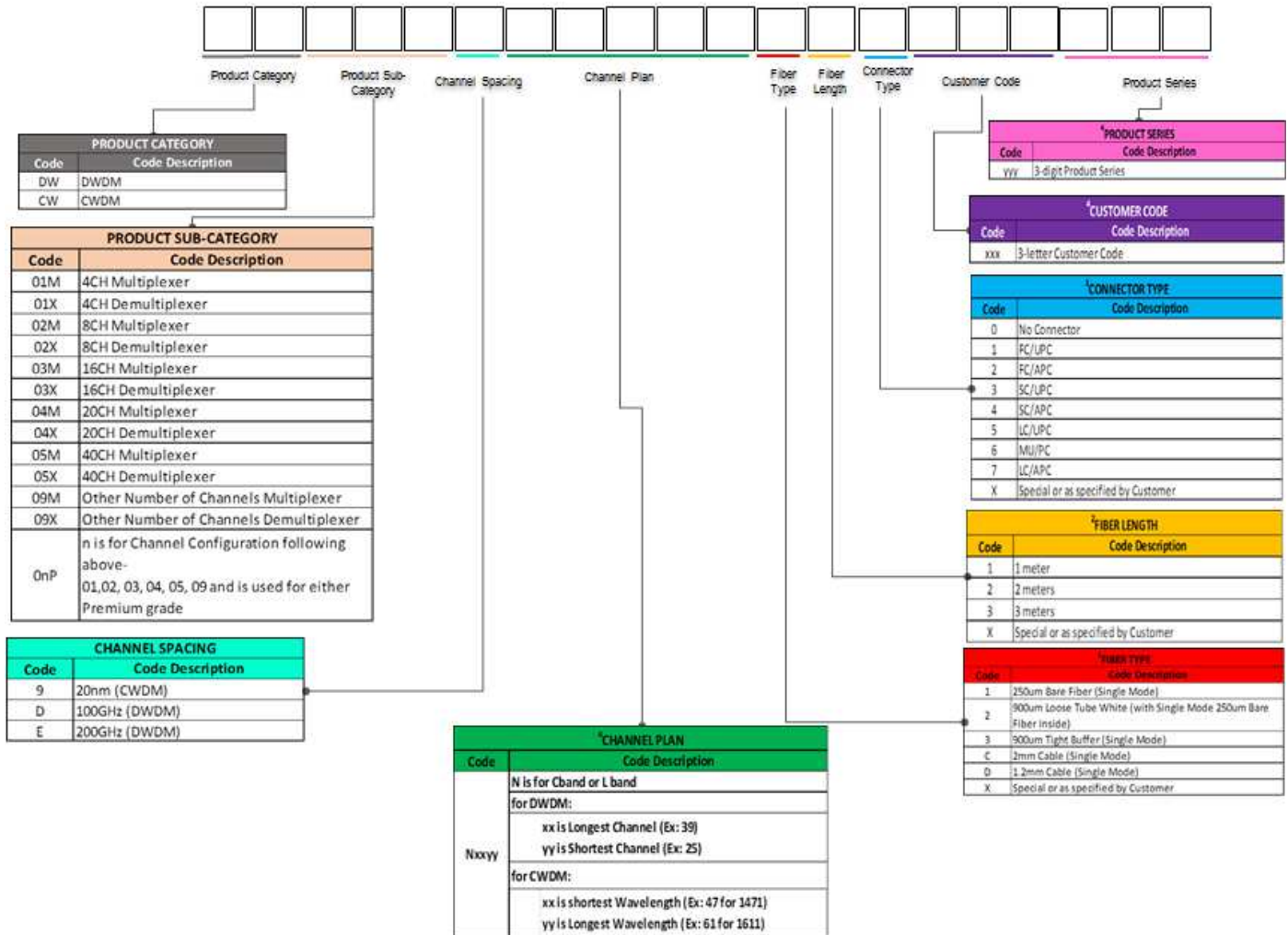
Parameter	Unit	2	4	8	12	16	20	40	
Operating Wavelength	nm	ITU							
Channel Spacing	GHz	100							
Center Wavelength	nm	ITU							
Passband BandWidth	nm	$\lambda_c \pm 0.11$							
DWDM port Insertion Loss	dB	≤1.2	≤2.2	≤3.2	≤3.4	≤3.8	≤4.0	≤4.2	
Uniformity	dV	≤1.0			≤1.5		≤2.0		
Passband Ripple	dB	≤ 0.5							
Adjacent Channel Isolation	dB	≥28							
Non-Adjacent Channel Isolation	dB	≥45							
Polarization Dependent Loss	dB	≤ 0.20					≤ 0.25		
Optical Return Loss	dB	≥50							
Directivity	dB	≥50							
Optical Power Handling	mW	≤ 500							
Operating Temperature Range	°C	-40~85							
Storage Temperature Range	°C	-40~85							
Fiber Type	-	ITU G657A2, G657 B2 and G65D Compliant Single Mode Fiber							
Port Identification	-	Cable Marker							
Package Size	Cassette	2ch/ 4ch: 60x35x6							
		8ch: 70x45x8							
		12ch / 16ch / 20ch: 110x90x8							
		40ch: 140x95x16							
	LGX	2ch / 4ch / 8ch : 1-slot 158 x 130(118) x 28.8(26.8)							
		16ch /20ch: 2-slot 158 x 130(118) x 57.6(56.1)							
		40ch: 3-slot 158 x 130(100) x87							

Notes:

1. All specifications include connector losses.
2. Uniformity is defined as loss difference between output ports.
3. Other customized channels are also available per customer's request
4. Other package size available upon request.

Ordering Information:

WDM in Cassette



Notes:

- Standard Fiber Type is ITU-T G657.A2/B2 and G652.D.
- Standard Package Size is 60x35x6mm for 4ch, 70x45x8mm for 8ch, 110x90x8mm for 16 and 20ch and 140x95x16mm for 40ch
- Fiber Length tolerance is +/-0.1 meter.
- All ports are with connector of the same type.
- Only applicable for products which are not covered by the Standard Specification.

Example: DW02XDC2720317

DWDM 100GHz Module, 8CH Demultiplexer, C27~C20, 900um Tight Buffer (Single Mode) with LC/APC connectors, one (1) meter

Go!Foton Inc. (Japan)
5-4 Tokodai, Tsukuba City
Ibaraki Pref. Japan, 300-2635
Tel: +81 029 847 8686
Fax: +81 029 847 8693
www.gofoton.co.jp

Go!Foton Europe Sales
Hoogerheide
The Netherlands
CustomerCare@gofoton.com
Tel: +31 164 62 04 22
Fax: +31 164 62 04 17
www.gofoton.eu

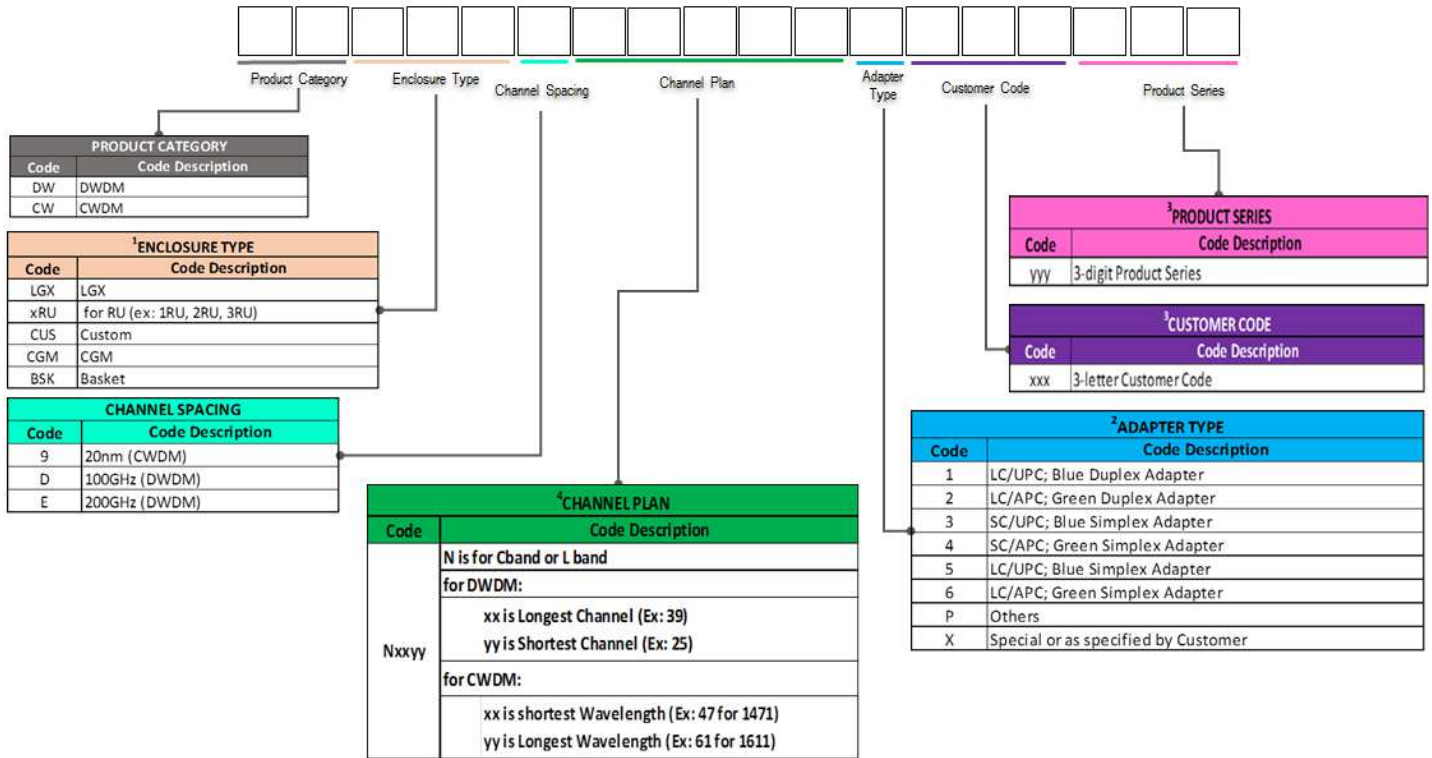
GF Micro Optics Philippines, Inc.
LTI Standard Factory Building
134 East Main Avenue, SEPZ
Laguna Technopark,
Biñan, Laguna 4024 Philippines
Tel: +63 2 751 0304
Fax: +63 2 751 0305
www.gofoton.ph

Go!Foton Nanjing Company Ltd.
Nanjing Jiangning National
High Tech Industrial Park
Nanjing Jiangning Science Park
2 Qiande Road, Building 7, 1st Floor
Jiangning, Nanjing
Jiangsu, 211100, China
Tel: +86 25 5216-3442
www.gofoton.cn

Go!Foton West Coast Sales
100 Century Center Court, Suite 203
San Jose, CA 95112, USA
Go!Foton Headquarters
28 World's Fair Drive
Somerset, NJ 08873, USA
Tel: +1 732 469 9650
Fax: +1 732 469 9654
www.gofoton.com

Ordering Information:

WDM in Enclosure



Notes:

- ¹ Standard Package Size is 1 slot for 4ch and 8ch, 2 slot for 16ch and 20ch and 3 slot for 40ch
- ² All ports are with connector and adapter of the same type.
- ³ Only applicable for products which are not covered by the Standard Specification.
- ⁴ Channel Plan may vary depending on customer request

Example: DWLGXDC27202

DWDM 100GHz Module, C27~C20, with LC/APC connectors and LC Green Duplex Adapter